

MTS

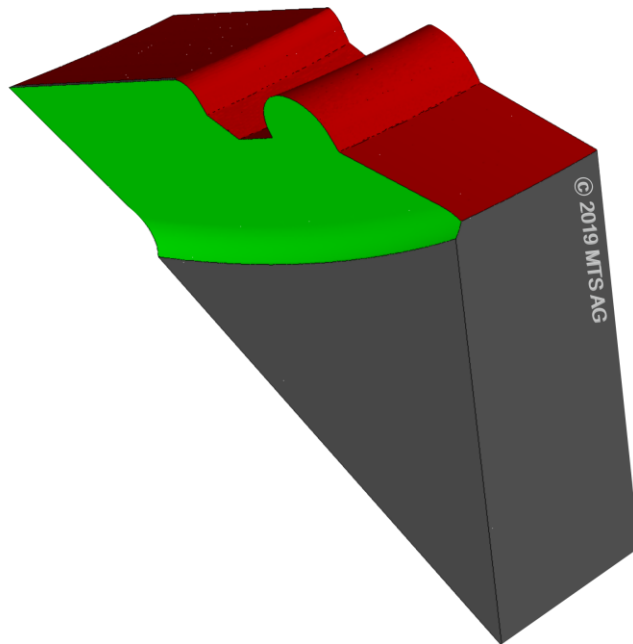
Product of the VOLLMER Group

tool-kit PROFESSIONAL by MTS – Product of the VOLLMER Group

Software-Modul

Spezifikation „Cutting Inserts/WMENU“

Stand: 30.01.25



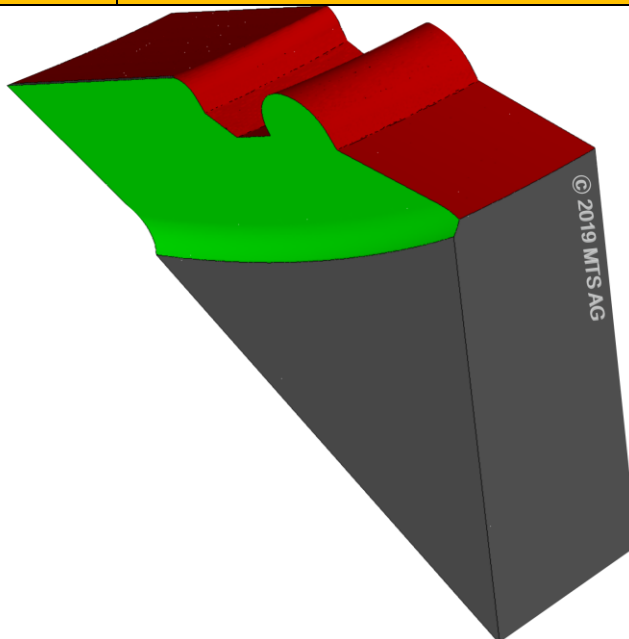
VOLLMER WERKE Maschinenfabrik GmbH
MTS
Innovationszentrum Freiburg (FRIZ)
Georges-Köhler-Allee 302
79110 Freiburg im Breisgau
Tel.: +49 7351 571 8141 / +49 160 5426017
info-mts@vollmer-group.com
www.mts-toolkit.com

MTS

Product of the VOLLMER Group

15.1 Cutting Inserts

WMENU



15.1 Basic Modul Cutting Inserts

- **Tool spectrum**
all convexe insert's profile
outer surface with clearance / chamfering
tools with longitudinal profile
tools with transversal profile
tools with frontal profile
tools with profile combinations
- **Blank construction**
blank by standard selection-table
blank by DXF-definition
- **Machining of outer surface**
Machinings:
Roughing
Finishing
Polishing.
- **Procedures:**
Cylindrical grinding
Linear grinding
Plunging

- **Chamfering of outer surface**
Front chamfering
Rear chamfering
- **Profile definition and machining**
Free constructed cutting profiles
Orientation: Longitud., transversal, frontal
Profile combinations
- **Preparing of profile cutting edge:**
Roughing
Finishing
Chamfering of cutting edge
- **Flute machining**
Two different procedures:
Logitudinal grinding
Transversal grinding (scalping)
- **Recessing and special features**
Creating recesses and special
geometrical elements will be done by
MTS-module „Open Procedure“.