

MTS

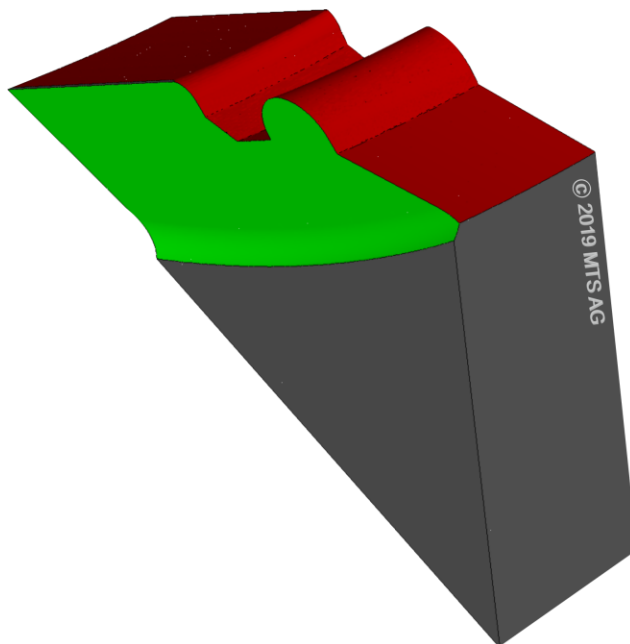
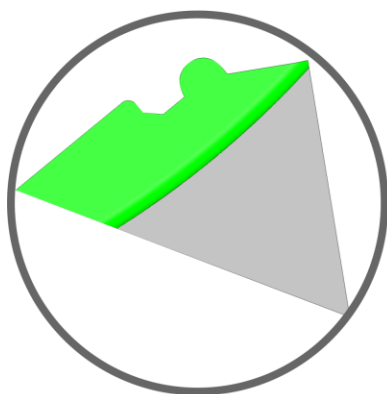
Product of the VOLLMER Group

tool-kit PROFESSIONAL by MTS – Product of the VOLLMER Group

Software-Modul

Spezifikation „Cutting Inserts/WMENU“

Stand: 15.01.25



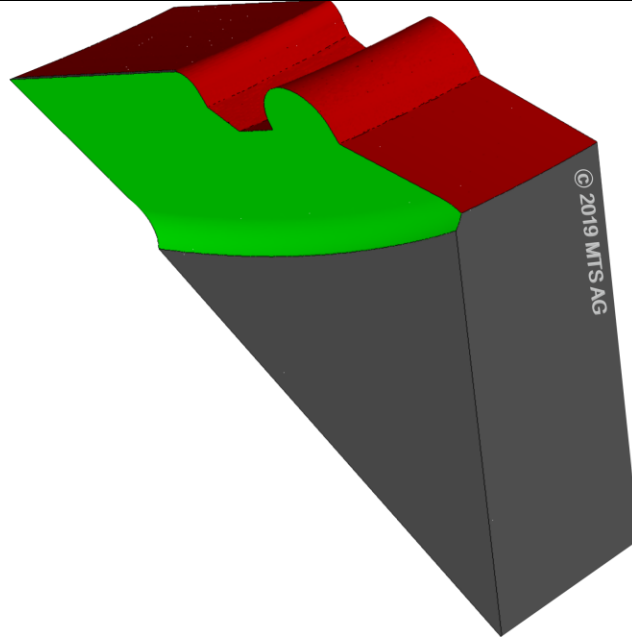
MTS – Product of the VOLLMER Group
Innovationszentrum Freiburg (FRIZ)
Georges-Köhler-Allee 302
79110 Freiburg im Breisgau
Tel.: +49 7351 571 8141 / +49 160 5426017
info@mtsag.net
www.mtsag.net

MTS

Product of the VOLLMER Group

15.1 Cutting Inserts

WMENU



15.1 Basic Modul Cutting Inserts

- **Tool spectrum**
all convex insert's profile
outer surface with clearance / chamfering
tools with longitudinal profile
tools with transversal profile
tools with frontal profile
tools with profile combinations
 - **Blank construction**
blank by standard selection-table
blank by DXF-definition
 - **Machining of outer surface**
Machinings:
Roughing
Finishing
Polishing.
 - **Procedures:**
Cylindrical grinding
Linear grinding
Plunging
- **Chamfering of outer surface**
Front chamfering
Rear chamfering
 - **Profile definition and machining**
Free constructed cutting profiles
Orientation: Longitud., transversal, frontal
Profile combinations
 - **Preparing of profile cutting edge:**
Roughing
Finishing
Chamfering of cutting edge
 - **Flute machining**
Two different procedures:
Logitudinal grinding
Transversal grinding (scalping)
 - **Recessing and special features**
Creating recesses and special
geometrical elements will be done by
MTS-module „Open Procedure“.